

SCOOPS



Quarterly publication of Alberta Farm Writers Association

2002 tour in the works

The 2002 AFWA tour and meeting will be June 20-21 in Grande Prairie.

According to AFWA president Geoff Ludkin, the Peace offers some unique farming aspects that will be of interest to anyone who hasn't been up that way in a while.

For instance, virtually all of the province's fescue production takes place in the Peace and it is an important crop in the region.

Diversification led to a number of bison, elk, and white tail deer farms in the Peace, offering a chance to visit one of many alternative livestock farming operations.

"To the north is the famous Dunvegan Bridge which crosses the Peace River," says Ludkin. "And that is where the Dunvegan historical site offers an excellent history of the Peace, which dates back to Alexander MacKenzie." The famous Shaftesbury Ferry also crosses the Peace River at that site.

Falher the honey capital of Alberta offers the chance to tour a honey facility. As well, the area is known for its predominant Francophone culture.

Agriculture and Agri-Food Canada maintains a Research Centre at Beaverlodge where they focus on northern farming practices. As well, the economic diversity of the Peace region is obvious with the presence of both a Canfor and a Weyerhaeuser plant.

Ludkin continues to investigate further tour stops and sites and would welcome any additional suggestions from members. Contact him at 780-538-0144, e-mail gludkin@agricore.com.

Weed whacking Alberta style

The Classical Weed Biological Control program started in 1952 and spearheaded by Lethbridge Research Centre has foreign weeds on the run. Using natural enemies from the weeds' homeland to keep them in check is so effective that they no longer use chemical herbicides to fight nodding thistle, St. John's Wort, leafy spurge, Dalmation toadflax, hound's tongue and purple loosestrife on millions of hectares of Alberta rangeland.

A growing niche market

According to an Agriculture and Agri-Food Canada report, exotic foods support \$6 billion in annual consumer food expenditures. They include ethnic foods with a buying population of nearly three million consumers.

To see the full report visit: www.agr.gc.ca/food/consumer/mrkreports/ethnic/tblcontents_e.html



Something to think about

The Ottawa Citizen newspaper published an excellent series on water, *The Global Water Crisis*, in August 2001. To obtain a copy of the series, contact the Ottawa Citizen library, (613) 596-3742, or Reader Sales & Service: 1-800-267-6100
Email: rss@thecitizen.southam.ca
or The Ottawa Citizen, P.O. Box 5020, 1101 Baxter Rd., Ottawa, ON, K2C 3M4.

Here are some interesting facts from those articles.

“Somewhere in the world, a child dies every eight seconds from drinking contaminated water.”

“Canada consumes 1.6 million litres of water per capita each year, twice as much water as the per capita rate of water consumption in France.”

“The Ottawa River has more water flowing through it than all of the rivers in Western Europe combined.”

More than half the country’s (Canada) freshwater flows north to the Arctic Circle, while 90 per cent of its population lives in the southern regions of the country.”

Cruise ships that dock in the port of Saint John, N.B., fill their tanks with water for less than \$200. The ships would pay

\$1,400 for the same amount of water across the border in Boston.”

“In New Brunswick, a voluntary well-testing program revealed that nearly half the water samples were contaminated with harmful bacteria.”

“The water supplies on 171 native reserves across Canada don’t meet federal health guidelines.”

“Halifax has been discharging raw sewage into its harbour for more than 250 years.”

“In 1999, 44 per cent of Canadian homes served by municipal water supplies had no water meters.”

“3.48 million water meters would have to be installed to allow volume pricing throughout Canada.”

“Flat-rate customers in Canada use 457 litres of water per day; volume-based consumers use 269 litres per day.”

“In Germany, daily per capita water use is 128 litres, in the United Kingdom, 149 litres.”

“Drumheller, Alta., facing a wastewater treatment plant at 95-per-cent capacity,

postponed a \$12 million expansion for nearly 15 years by spending more than \$1 million retrofitting every house in town with a six-litre toilet.”

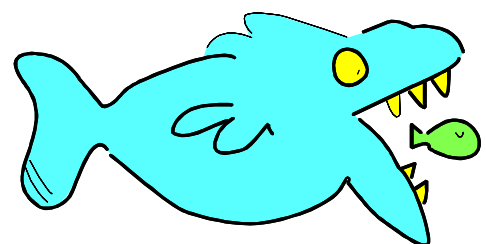
The Regional municipality of Waterloo, Ont. “sold 6,000 rain barrels in three hours... By the end of the program, ... they distributed 25,000 barrels...”

“...the probability of an economically significant drought, with multibillion-dollar losses, occurring by 2030 is 40-45 per cent in Alberta...”

“... the average length of drought during the past 2,000 years is 12 years.”

“The 20th century was one of the wettest on record.”

“Statistically, any year could be the year of drought. They are a natural feature of the Prairies. There is no year in which we are absolutely safe.”



Scoops

published quarterly by Alberta Farm Writers’ Association and free to members.

Editor: Claudette Lacombe

P.O. Box 351

Rockyford, AB T0J 2R0

E-mail: umbel@telusplanet.net

Alberta Farm Writers Association

2001 Executive

President

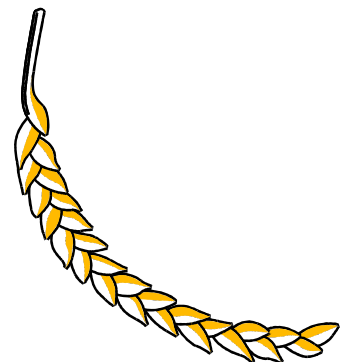
Geoff Ludkin

gludkin@agricore.com

Secretary/Treasurer

Janet Kanters

janetkanters@shaw.ca



Independent publisher launches new magazine

The publisher of Alberta Beef Magazine and Beef Illustrated crossed the border and launched a new cattle publication called "Saskatchewan Beef" magazine.

The cattle industry in Saskatchewan saw significant growth over the past few years with new and returning industry producers. Publisher Garth McClintock felt the time was ripe for an independent cattle magazine in Saskatchewan that reflects the entrepreneurial spirit of producers

in that province. He added, "Because we are privately owned, we have a different perspective of cattle industry issues. We are essentially like cattle producers - independent."

The first edition of the new magazine was published in October 2001. Commencing in 2002, Saskatchewan Beef will publish quarterly. McClintock added that the magazine will focus on cattle industry, trade and general agriculture issues of interest to Saskatchewan cattle

producers. He commented, "We have found that our audience wants background information and opinion on the big issues that affect their livelihood. We'll leave advice on 'how to ranch' to other publications."

McClintock added that he intends to use farm writers based in Saskatchewan to report on provincial issues. For further information call Garth McClintock or Will Verboven at (403)250-1090

Funds for producers

Agricultural producers may benefit from a proposal brought to the federal government by Ducks Unlimited Canada.

The Conservation Cover Incentive Program (CCIP) proposes funding for landowners to restore or protect areas where land meets water and convert cultivated marginal land to permanent vegetation.

The aim is to restore and protect riparian areas, prevent sedimentation, increase carbon sequestration, stabilize soil and increase the quality and quantity of fish and wildlife habitat.

Ducks Unlimited claims it will provide significant financial resources to a government program that supports its CCIP proposal and work with the government to establish the program.

For more information contact Lauralou Cicierski, 204-467-3252, or at l_cicierski@ducks.ca



AFWA member news

Claudette Lacombe became a Village of Rockyford councillor this October.

Contact revisions

Les Brost has moved his Southern Star Communications office from Walsh, Alberta, to Lethbridge. He can be contacted at 125 Edgewood Blvd. W. in Lethbridge, T1K 5Z6. Ph 403-320-0991 or 403-528-5979 or contact him via e-mail at sostar@telusplanet.net.

Due to the Agricore/UGG merger, jobs held by AFWA members Colleen Baxter, Ray Kettenbach and Simone Richter were eliminated. All remain as AFWA members, however, and can be contacted at:

Colleen: Ph: 265-6540

Ray: 7815 Calla Donna Place S.W., Calgary, T2V 2R2. Ph 403-259-2475

Simone: 1207 MacKid Rd. N.E., Calgary, T2E 6A8. Ph 403-250-1655.

Janet Kanters has a new e-mail address:

janetkanters@shaw.ca.

The office of Alberta Pork moved to 4828 - 89 Street in Edmonton, T6E 5K1. Paul Hodgman and Ed Schulz who work with Alberta Pork maintain the same fax and e-mail information, but this is their new mail address.

Agriculture and Agri-Food Canada has a new web address: www.agr.gc.ca

Coming agricultural events

Land Economics

January 3, 4, 2002 Lethbridge
Jan. 21-22 Medicine Hat
\$245
Bradley Smith (403) 223-7907
bradley.smith@gov.ab.ca

Thinking About Strategy Series

Westlock Jan 8, 2002
Jan 9, 2002 Olds
Jan 10, 2002 Lethbridge
\$50 plus GST
Bill Chapman, AAFRD
(780) 349-4465
bill.chapman@gov.ab.ca

Price It Right - Costing Your Product Workshop

Jan 9
Airdrie Agriculture Centre
<http://www.agric.gov.ab.ca>
Allan Pelletier
780-422-2591
allan.pelletier@gov.ab.ca

Peace Country Beef Congress

Jan 11 - 12
Evergreen Park Grande Prairie
Patricia Fraser
780-532-4888

Land Use Conference

Jan 14 - 16, 2002
Before November 30/01 - \$250;
After November 30/01 - \$300
Shaw Conference Centre Ed-
monton
<http://www.landuse.ab.ca/>
(780) 444-6344



Agricultural Financial Management 2002

January 15-17
Camrose Regional Exhibition
\$150 + GST
<http://www.agric.gov.ab.ca>
Shirley Damberger
-800-296-8112, or
Ron Lyons P.Ag. Financial
Mangement Specialist
ron.lyons@gov.ab.ca

Canadian Bull Congress

Jan 18 - 19
Camrose Regional Exhibition
www.bullcongress.com
Teryl Fankhanel
780-672-3640
tfankhanel@cre.ab.ca



Banff Pork Seminar

Jan 22 - 25, 2002
Banff Centre
<http://www.afns.ualberta.ca/bps/>
(780) 492-3236
bps@afns.ualberta.ca

FarmTech 2002 Global

Perspectives...Local Knowledge
Jan 30 - Feb 1, 2002
Westerner Park Red Deer, AB
Contact:
(toll-free) 1-866-327-6832
doug.dion@home.com
www.farmtechconference.com

Canadian Honey Council and Canadian Association of Professional Apiculturists

Jan 30 - Feb 2
Banff Centre for Conferences
\$150, \$100 for spouse
<http://www.honeycouncil.ca/>
(403) 208-7141
chc-ccm@telusplanet.net

Growing Rural Tourism - Moving Forward

Feb 11-13,
Camrose Regional Exhibition
Toll Free 1-866-488-9497
email: ruraltourism02@aol.com
Lisa Houle
403-340-5369
lisa.houle@gov.ab.ca

A "How To" Workshop - Explore Direct

February 27 & March 6
Camrose, AB
Feb 28 & Mar 7 Westlock
Camrose Professional Centre
#103, 5015-50 Avenue
Darleen Lynes
(780)349-4465
(toll free 310-0000)
darleen.lynes@gov.ab.ca

